

Master of Recycling



# RECYCLING PRODUCT LINE-UP



January 2019

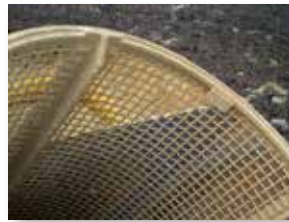
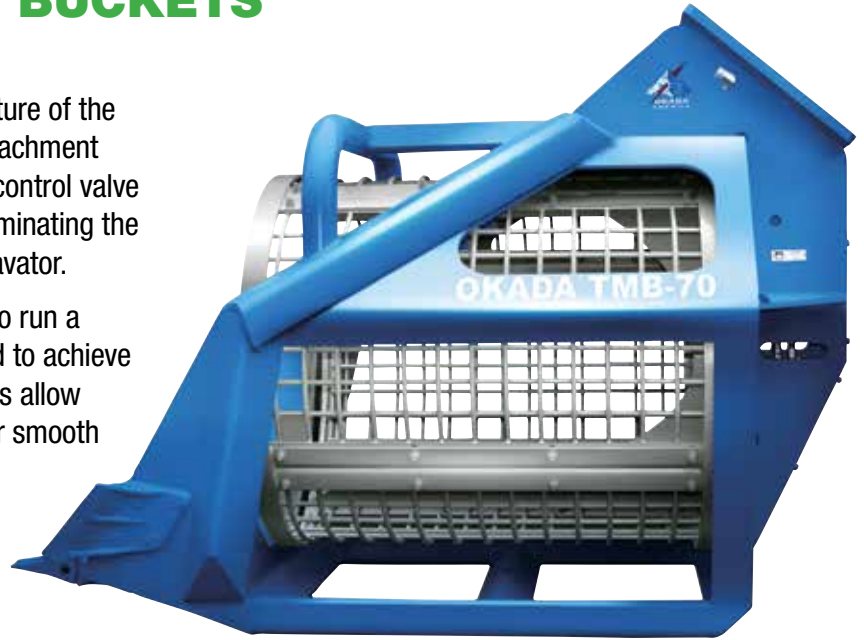


# TMB SERIES

## TROMMEL SCREENING BUCKETS

The compact design and tough frame structure of the Okada trommel bucket (TMB) make this attachment lightweight and easy to operate. A built-in control valve regulates flow and pressure to the TMB, eliminating the need for costly plumbing on the carrier excavator.

A double-acting single pump flow kit used to run a thumb, crusher or shear is all that is needed to achieve two-way rotation. The in-body control valves allow the drum rotation speed to be fine-tuned for smooth operation in a variety of applications.



An assortment of screen sizes are available, making the trommel screening bucket useful for a variety of screening processes. The rotation drum consists of four bolt-on concave screens that are easily replaced, eliminating costly downtime.

### SPECIFICATIONS

		TMB30	TMB50	TMB70	TMB120
Operating weight	lbs	1325	2650	4900	6174
	kg	601	1202	2222	2800
Oil flow	gpm	16-35	26-42	44-64	57-80
	lpm	61-132	98-159	167-242	216-303
Operating pressure	psi	3000	3000	3000	3000
	bar	210	210	210	210
Overall length	inches	65.6	93.3	100.8	116.7
	mm	167	237	256	296
Overall width	inches	42.5	55.9	63.4	66.1
	mm	108	142	161	168
Screen diameter	inches	32.7	43.3	47.2	55.1
	mm	83	110	120	140
Screen length	inches	37.4	49.2	55.1	63
	mm	95	125	140	160
Screen drum capacity	yd <sup>3</sup>	0.7	1.6	2.1	3.2
	m <sup>3</sup>	0.5	1.2	1.6	2.4
Carrier weight range	1000 lbs	12-20	20-38	40-60	66-76
	metric tons	5.4-9.1	9.1-17	18-27	30-35

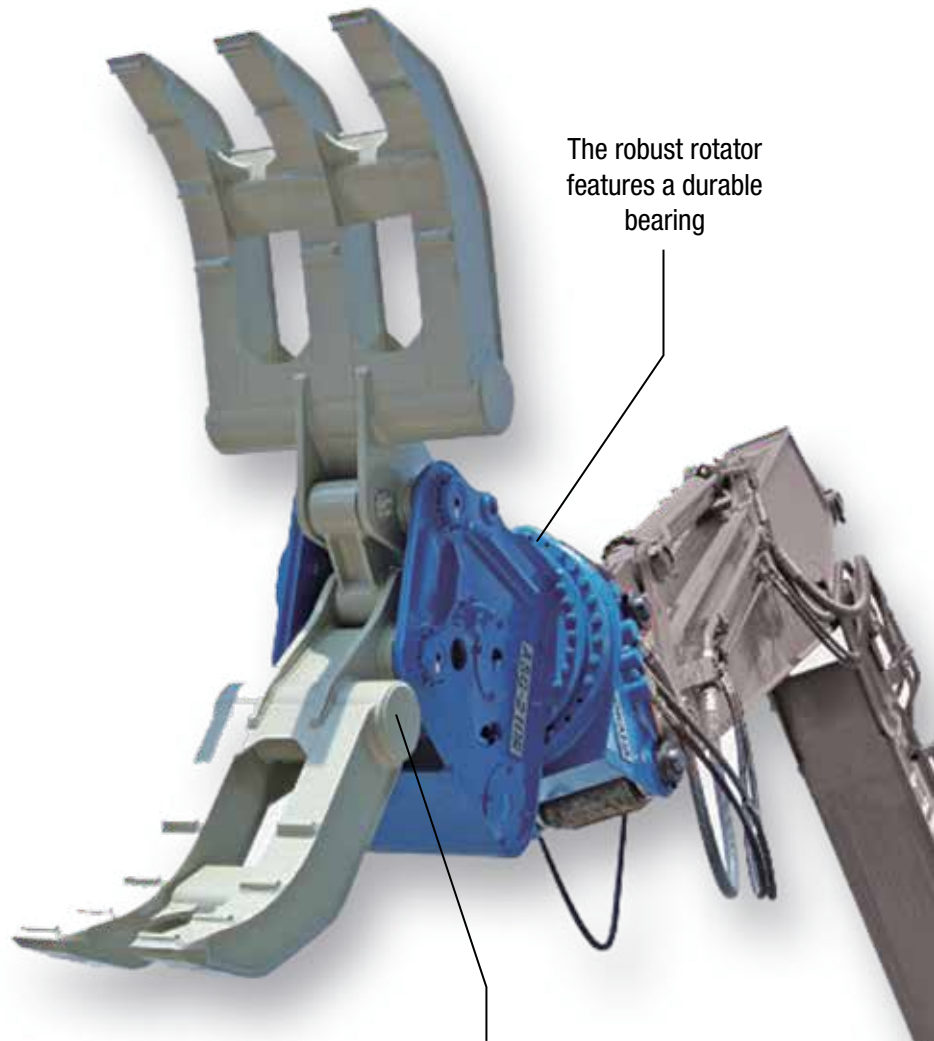
Specifications are subject to change without notice.



# ASG SERIES

## SILENT GRAPPLE

The ASG silent grapple is used for demolition of wooden structures, scrap handling, loading, sorting and other applications.



The robust rotator features a durable bearing

A powerful hydraulic motor provides easy rotation of long, heavy objects

### SPECIFICATIONS

		ASG-30R / RD	ASG-60R	ASG-130R / RDF	ASG-210R
Operating weight	lbs	575 / 585	1170	2140 / 2185	3510
	kg	260 / 265	530	970 / 990	1590
Oil flow	gpm	Up to 11	Up to 16	Up to 26	Up to 53
	lpm	Up to 40	Up to 60	Up to 100	Up to 200
Operating pressure	psi	3600 / 3000	4000	4000	4000
	bar	250 / 210	280	280	280
Overall length	inches	55.9	73.2	88.8	102.8
	mm	1420	1860	2255	2610
Max. claw opening	inches	43.3	65.0	72.0	91.9
	mm	1100	1650	1830	2335
Claw width (3 / 2)	inches	11.6 / 6.1	18.9 / 10.6	23.6 / 13.4	31.5 / 18.1
	mm	295 / 155	480 / 270	600 / 340	800 / 460
Claw depth (3/2)	inches	25.8	33.7	37.6	47.2
	mm	655	855	955	1200
Carrier weight range	1000 lbs.	5-12	13-20	22-35	40-56
	metric tons	3-5	6-9	10-16	18-25

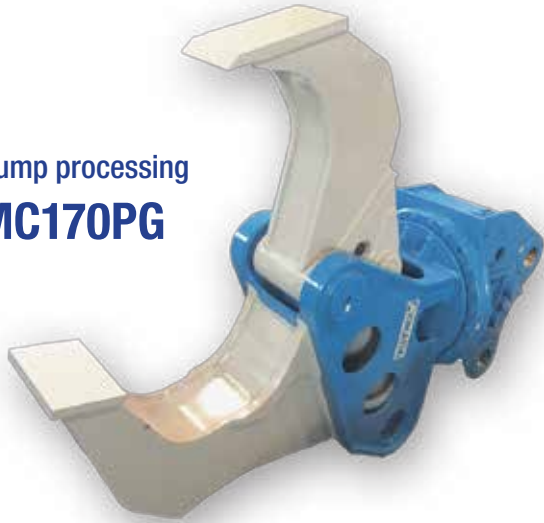
Specifications are subject to change without notice and assume the use of an Okada universal pin mount. The solenoid valve installed on the ASG-30RD and ASG-130RDF is used in breaker piping.

# OMC SERIES

## WOOD CUTTER

OMC wood cutters are used to process logging materials, root balls, stumps, and other wood products.

For stump processing  
**OMC170PG**



Rotating models (ARTS/HR) and fixed models are available



**OMC160**  
**FIX/ARTS/HR**

A unique saw-shaped blade efficiently processes wood material



### SPECIFICATIONS

		OMC160 ARTS / HR	OMC160 FIX	OMC170PG ARTS / HR
Operating weight	lbs	3110 / 3045	2405	3087 / 3045
	kg	1410 / 1380	1090	1400 / 1380
Oil flow	gpm	26-106	26-106	26-106
	lpm	100-400	100-400	100-400
Operating pressure	psi	4600	4600	4600
	bar	320	320	320
Overall length	inches	82.7	66.9	88.2
	mm	2100	1700	2240
Overall width	inches	62.8	62.8	67.3
	mm	1595	1595	1710
Max. jaw opening	inches	28.0	28.0	34.1
	mm	710	710	865
Crushing force	US tons	39.3	39.3	39.3
	kN	350	350	350
Carrier weight range	1000 lbs	24-48	24-48	24-48
	metric tons	11-22	11-22	11-22

Specifications are subject to change without notice and assume the use of an Okada universal pin mount.



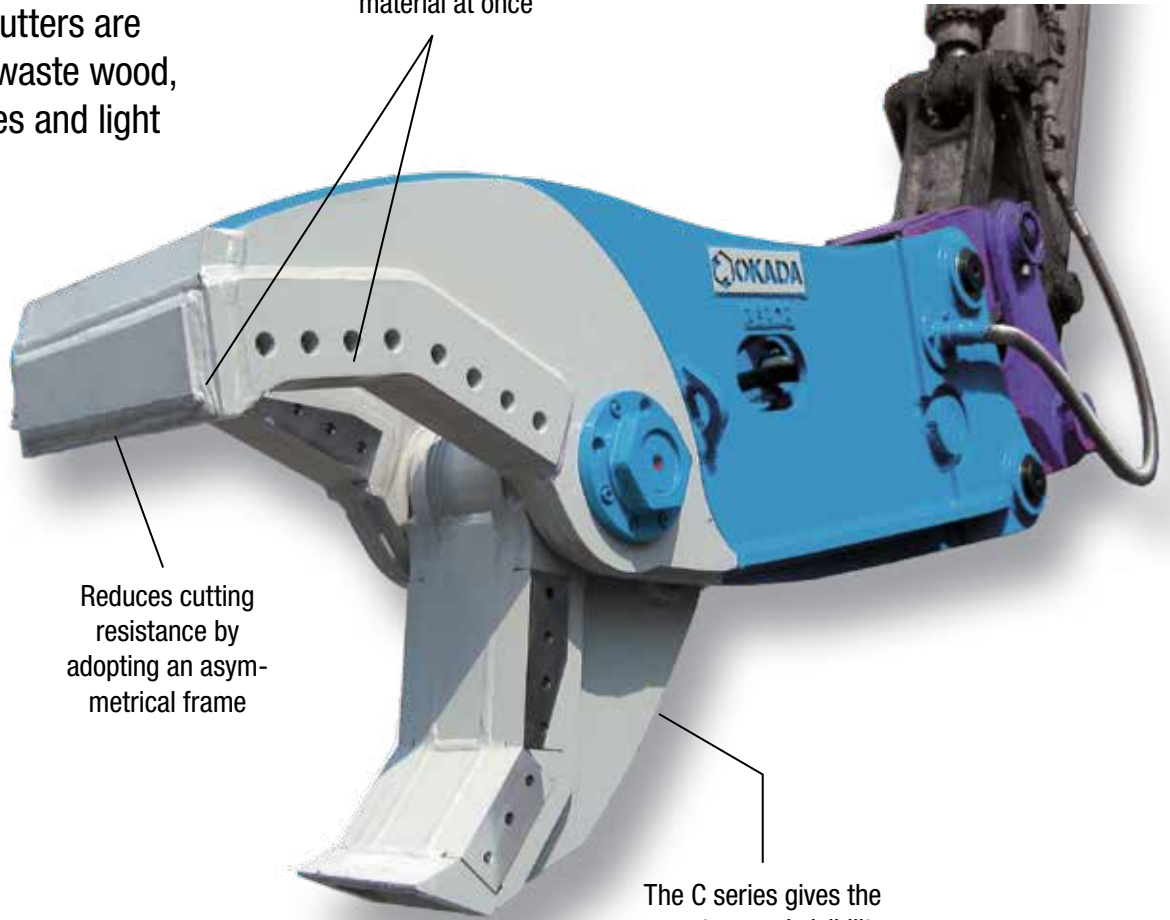
# C SERIES CLEAN CUTTER

Hydraulic clean cutters are used to process waste wood, waste plastic, tires and light gauge steel.

Cuts two surfaces of material at once

Reduces cutting resistance by adopting an asymmetrical frame

The C series gives the operator good visibility for easy operation



## SPECIFICATIONS

		C-100	C-200
Operating weight	lbs	2128	3087
	kg	965	1400
Oil flow	gpm	26-53	53-106
	lpm	100-200	200-400
Operating pressure	psi	4600	4600
	bar	320	320
Overall length	inches	67.9	76.6
	mm	1725	1945
Max. claw opening	inches	23.8	27.8
	mm	605	705
Ripping blade length	inches	9.6 / 17.3	10.8 / 19.5
	mm	245 / 440	275 / 495
Cutter blade length	inches	15.7 / 18.1	18.1 / 21.7
	mm	400 / 460	460 / 550
Crushing force	US tons	42.7	80.9
	kN	380	720
Carrier weight range	1000 lbs.	22-28	40-46
	metric tons	10-13	18-21

Specifications are subject to change without notice and assume the use of an Okada universal pin mount.

# PULVERIZER OSC SERIES

Secondary breaking crushers were developed as a result of a growing need to reduce disposal volume and recycle concrete waste created during concrete building demolition. The flat, wide jaw design and an internal speed valve make it possible to grab and crush large sections of concrete quickly.

The OSC220A has a replaceable tooth pad.



## SPECIFICATIONS

		OSC35A	OSC70A	OSC135A	OSC200A	OSC220A	OSC360A	OSC450V
Operating weight	lbs	620	1430	2400	3950	4277	6970	7610
	kg	280	650	1090	1790	1940	3160	3450
Oil flow	gpm	7-13	16-35	26-63	44-116	44-116	66-132	79-159
	lpm	25-50	61-132	98-238	167-439	167-439	250-500	300-600
Operating pressure	psi	4000	4000	4000	4600	4600	4600	4600
	bar	280	280	280	320	320	320	320
Overall length	inch	49	62	76	86	75	106	119.9
	mm	1245	1580	1930	2190	1905	2700	3045
Overall height	inches	27.8	37.8	46.3	55.5	53.7	69.3	72.4
	mm	705	960	1175	1410	1365	1760	1840
Maximum jaw opening	inches	16.9	23.6	28.7	34	34.8	43.5	47.2
	mm	430	600	730	860	885	1105	1200
Cutter blade length	inches	3.5	3.9	5.9	5.9	5.9	7.1	7.1
	mm	90	100	150	150	150	180	180
Crushing force at center of jaw	US tons	35	51	67	99	99	112	129
	kN	305	450	600	880	880	1000	1150
Carrier weight range	1000 lbs	6.6-11	13-20	22-35	40-56	40-77	60-96	66-104
	metric tons	3-5	6-9	10-16	18-25	18-35	27-45	30-48

- 1) All models are equipped with a speed valve for increased cycle time and a built-in pressure relief valve.
- 2) The replaceable tooth pad is only available for the OSC220A model.
- 3) The above specifications assume the use of an Okada universal pin mount.
- 4) Specifications are subject to change without prior notice.

# MAGNET PULVERIZER

Quickly clean up rebar!



## SPECIFICATIONS

		OSC200MV	OSC200HMV
Operating weight	lbs	4720	4760
	kg	2140	2160
Oil flow	gpm	44-116	44-116
	lpm	167-439	167-439
Operating pressure	psi	4600	4600
	bar	320	320
Overall length	inches	81.7	81.7
	mm	2075	2075
Overall height	inches	61.4	61.4
	mm	1560	1560
Maximum jaw opening	inches	34.2	34.2
	mm	870	870
Cutter blade length	inches	5.9	5.9
	mm	150	150
Crushing force at center of jaw	US tons	99	99
	kN	880	880
Magnet phase length	inches	27.2x21.3	27.2x21.3
	mm	690x540	690x540
Voltage for magnet	V	24V	24V
Rating current of magnet	A	50A	75A
Carrier weight range	1000 lbs	40-56	40-56
	metric tons	18-25	18-25

- 1) All models are equipped with a speed valve for increased cycle time and a built-in pressure relief valve.
- 2) The above specifications assume the use of an Okada universal pin mount.
- 3) Specifications are subject to change without prior notice.



# ROTATING PULVERIZER ORC SERIES

- Hydraulic rotator
- Large capacity speed valve
- Large jaw opening

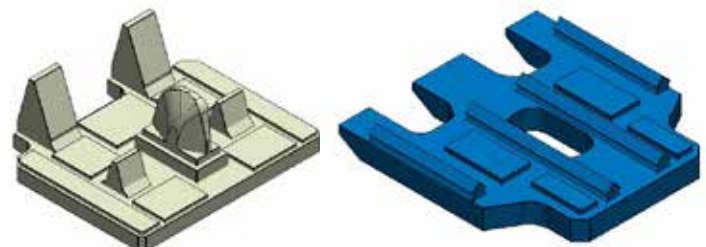


**ORC200**



**ORC220A**

**Replaceable tooth pad**



## SPECIFICATIONS

		ORC200	ORC220A
Operating weight	lbs	4500	5340
	kg	2050	2420
Oil flow	gpm	53-106	53-106
	lpm	200-400	200-400
Operating pressure	psi	4600	4600
	bar	320	320
Overall length	inches	90.6	88.8
	mm	2300	2255
Overall height	inches	60	48.4
	mm	1518	1230
Maximum jaw opening	inches	31.7	31.7
	mm	805	805
Cutter blade length	inches	7.1	7.1
	mm	180	180
Crushing force at center of jaw	US tons	101	84
	kN	900	750
Carrier weight range	1000 lbs.	40-77	48-84
	metric tons	18-35	22-38

- 1) All models are equipped with a speed valve for increased cycle time and a built-in pressure relief valve.
- 2) The replaceable tooth pad is only available for the ORC220A model.
- 3) The above specifications assume the use of an Okada universal pin mount.
- 4) Specifications are subject to change without prior notice.

Intelligent Technology



## Okada America Inc.

12950 SE Hwy 212 Bldg. D  
Clackamas, OR 97015  
Tel: 503-557-7033  
Fax: 503-557-7779

904 Medina Rd.  
Medina, OH 44256  
Tel: 330-239-2666  
Fax: 330-239-3670

115 Commerce Blvd  
Cleburne, TX 76033  
Tel: 817-774-1295

[www.okadaamerica.com](http://www.okadaamerica.com)