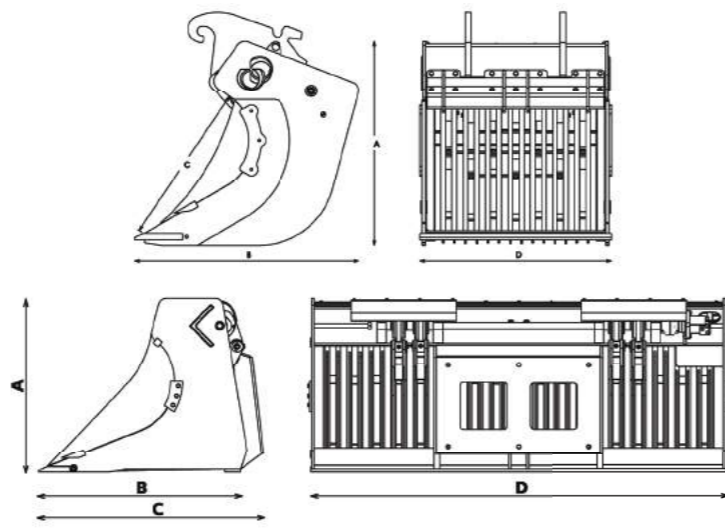


# Specifications



Type EVB   Excavator	600 S	800 S	1200 S	1200 I
<b>Information</b>				
Machine class (lbs)	28.665 - 39.690	35.300 - 55.100	46.300 - 77.200	46.300 - 77.200
Weight (lbs)*	2426	3252	4156	4178
Cubic yards (CuYd)	159	211	317	317
Rotar Hole-pattern	140 - 150	140 - 150	140 - 150	140 - 150
Dimension A (inch)	50,2	50,2	50,2	51,0
Dimension B (inch)	55,1	55,1	66,7	67,7
Dimension C (inch)	39,4	39,4	44,9	44,9
Dimension D (inch)	47,2	61,4	63,4	63,4
Max. operating pressure motor (psi)	2031	2031	2031	2031
Max. oil volume (gal/min)	26,4	26,4	26,4	26,4

Type RVB   Wheel loader	800 S	950 S	1500 S	2000 S	2300 I	2500 I
<b>Information</b>						
Machine class (lbs)	10.000 - 16.500	13.200 - 19.850	16.550 - 22.000	22.050 - 26.500	26.500 - 33.100	33.100 - 44.100
Weight (lbs)*	1896	2095	3308	3969	4983	5149
Cubic yards (CuYd)	271	305	436	542	588	661
Rotar Hole-pattern	430	430	450	450	460	460
Dimension A (inch)	81,1	91,3	95,3	104,3	110,2	114,6
Dimension B (inch)	39,2	39,2	45,9	45,9	45,9	45,9
Dimension C (inch)	37,4	37,4	44,7	50,6	58,5	58,5
Dimension D (inch)	47,8	47,8	50,5	56,4	61,8	61,8
Max. oil volume (gal/min)	20	20	20	20	20	20
Max. operating pressure motor (psi)	2031	2031	2031	2031	2031	2031

\* Weight without bolt-on adapterplate



## RVB/EVB-series

**Rotar North America, Inc**  
**Address** 38319 Western Parkway (Unit-D)  
 Willoughby, Ohio 44094

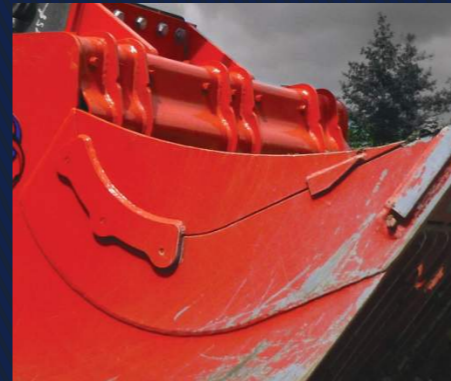
**Telephone** 216-744 1022  
**E-mail** info@rotar.com  
**Website** www.rotar.com



# RWB/EVB

## Rotar Segregator Bucket

The Rotar Segregator Bucket is a jack of all trades: whether you are breaking up and cleaning paving slabs, clearing construction and demolition sites, or sorting debris and soil – it is the attachment for you.



### Sturdy power train

This versatile and multi-deployable Rotar Segregator Bucket has been fitted with a sturdy power train. The eccentrics on the train create a back-and-forth motion of the slats sections. Power train maintenance is very simple and every lubrication point is easily accessible.

### Hydraulic system

Processing a huge volume of materials every hour takes no more than attaching two hydraulic hoses to the excavator or wheel loader. The segregator bucket's hydraulic system is protected against peak pressures and excessive oil volumes. Customers can also have the Rotar Segregator Bucket fitted with replaceable teeth on the cutting edge.



**GET THE  
RED CRUSH!**